

Retail/Office

Space

- Ground Floor
10,416 sf
- Lower Level
9,812 sf

Ceilings

- Ground: 12' 9"
- Lower Level: 11' 8"

Frontage

- 160' Wraparound
Frontage

Price

- Ground: \$60/sf
- Lower Level: \$30/sf

Possession

- Immediate

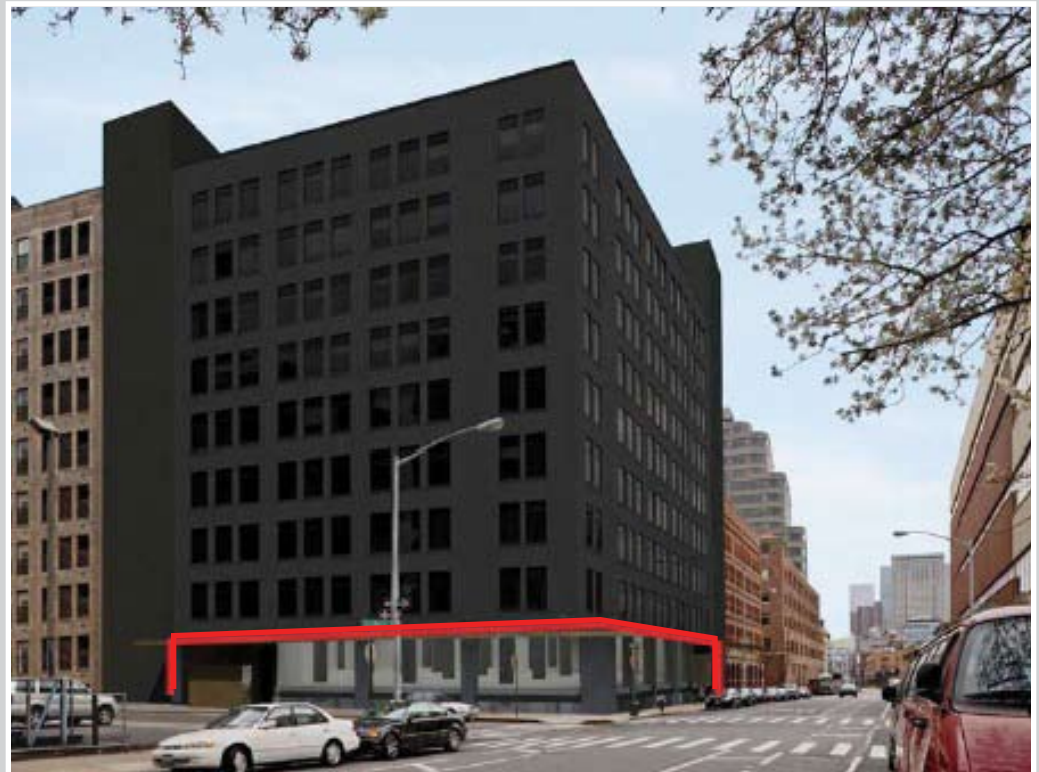
Neighbors

- EN Brasserie
- Printing House Gym
- Olatz
- Matrix Global
Academy

Contact

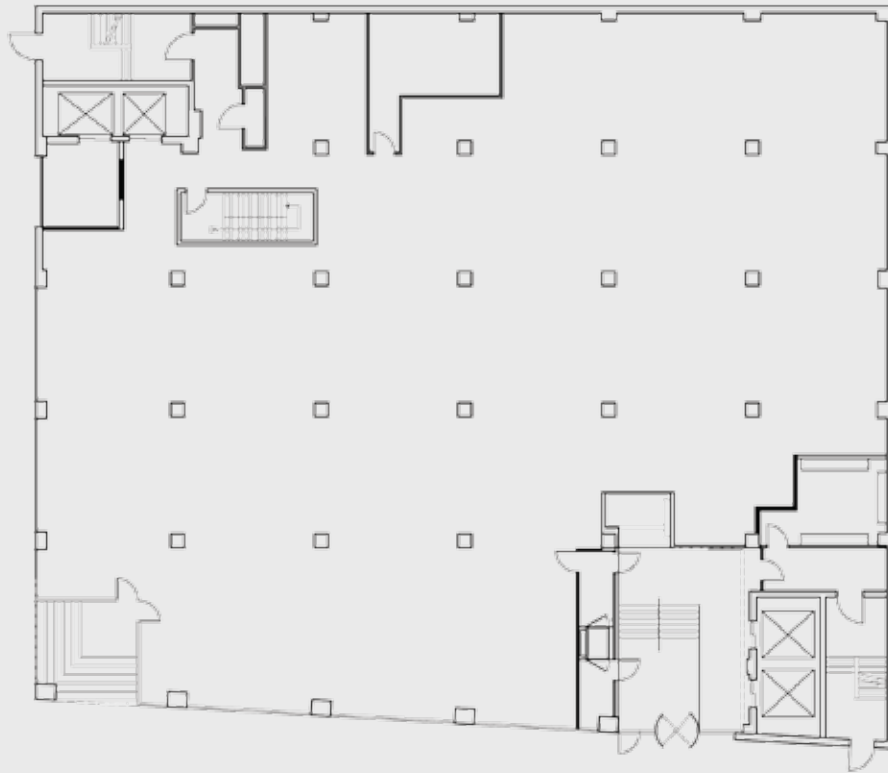
- **Christopher Owles**
212.604.9002
chris@sinvin.com
- **Trisha Jerry**
646.673.8757
trisha@sinvin.com
- **www.sinvin.com**

Paramount Club Locale
w/Obtainable Private Rooftop
609 Greenwich Street
Southeast Corner of Leroy Street



- Option to have private elevator leading to 8,000 sf roof deck with dramatic views of Hudson River and Statue of Liberty
- Elevated retail space on a highly visible corner magnificently showcases its occupant
- Excellent infrastructure, including an existing flue which runs from the basement to the roof
- Restaurant, showroom, gallery, and luxury spa are all strong potential uses for this expansive and flexible space (all uses considered)

Ground Floor
10,416 sf



Lower Level
9,812 sf

