

Commercial Space

Space

- Ground Floor
2,000 sf
- Basement
1,900

Frontage

- 15'

Rent

- Negotiable

Possession

- Immediate

As exclusive agent for the landlord we are pleased to offer...

59 Thompson Street

Between Spring and Broome Streets

Prime SoHo Location: Landlord Will Build to Suit

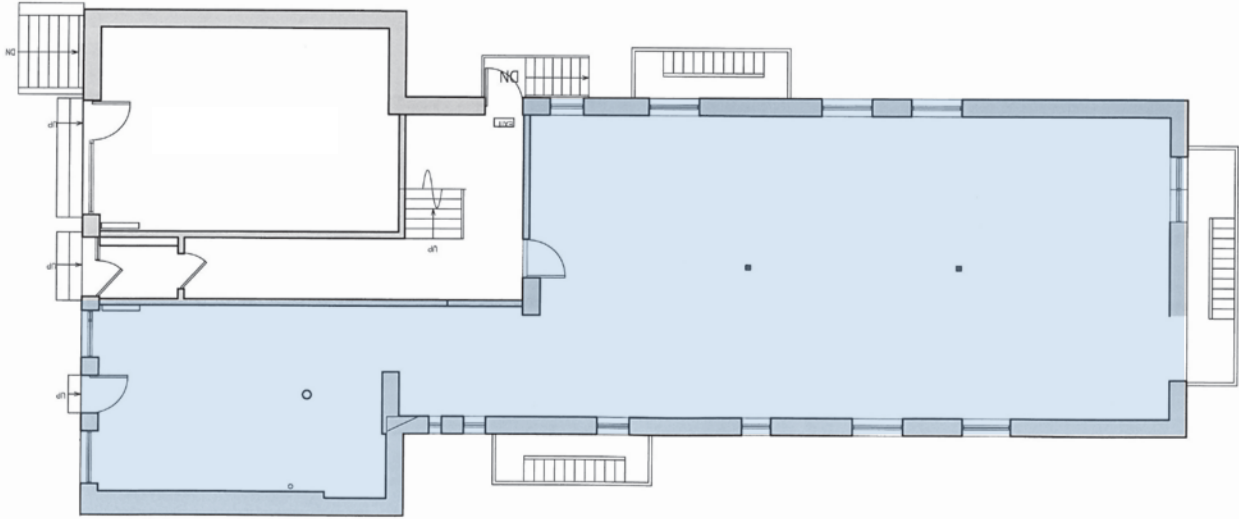


Contact

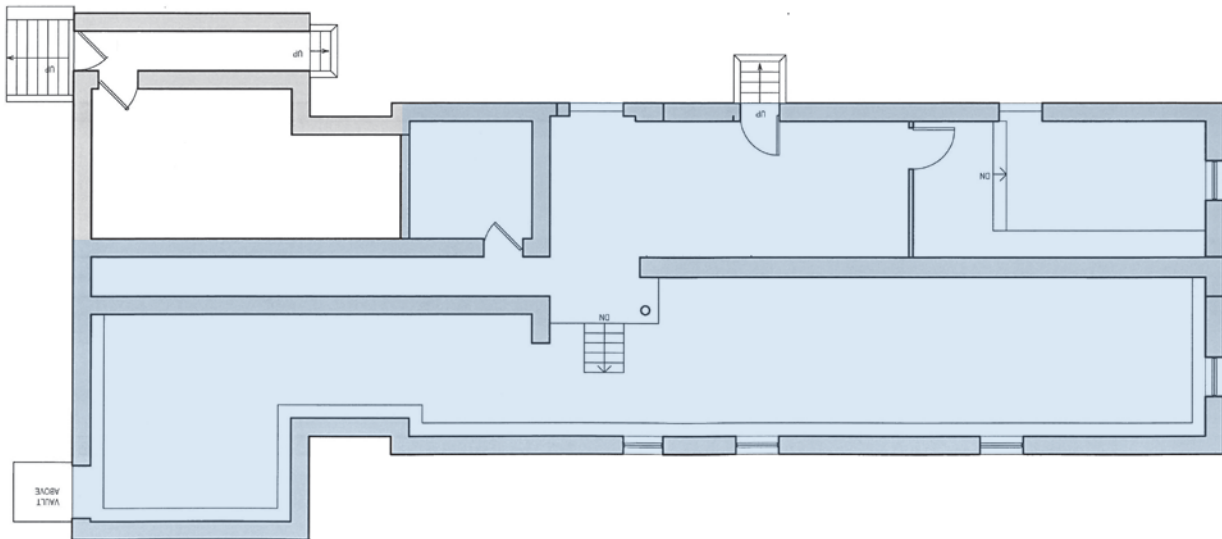
- **Simone Lillian**
646.673.8748
simone@sinvin.com
- **Christopher Owles**
212.604.9002
chris@sinvin.com
- **www.sinvin.com**

- Commercial Space on Soho Block
- Possibility for Backyard Space
- Across From Thompson Hotel
- Use Group 6 Not Permitted

Thompson Street



Ground Level



Lower Level