

PREMIER HIGH LINE DISTRICT OFFICE SPACE



ENTIRE THIRD FLOOR 6,000 SF

THIRD FLOOR RENT \$44/sf

ENTIRE FOURTH FLOOR 6,000 SF

FOURTH FLOOR RENT \$44/sf

ENTIRE FIFTH FLOOR 6,000 SF

FIFTH FLOOR RENT \$42/sf

CEILINGS 11 FT

POSSESSION Immediate

PRIME FEATURES:

Entire building has been recently gut renovated with all new building systems

Great natural light from an abundance of windows • High ceilings, hardwood floors, exposed brick walls

Tenant controlled HVAC with direct electric

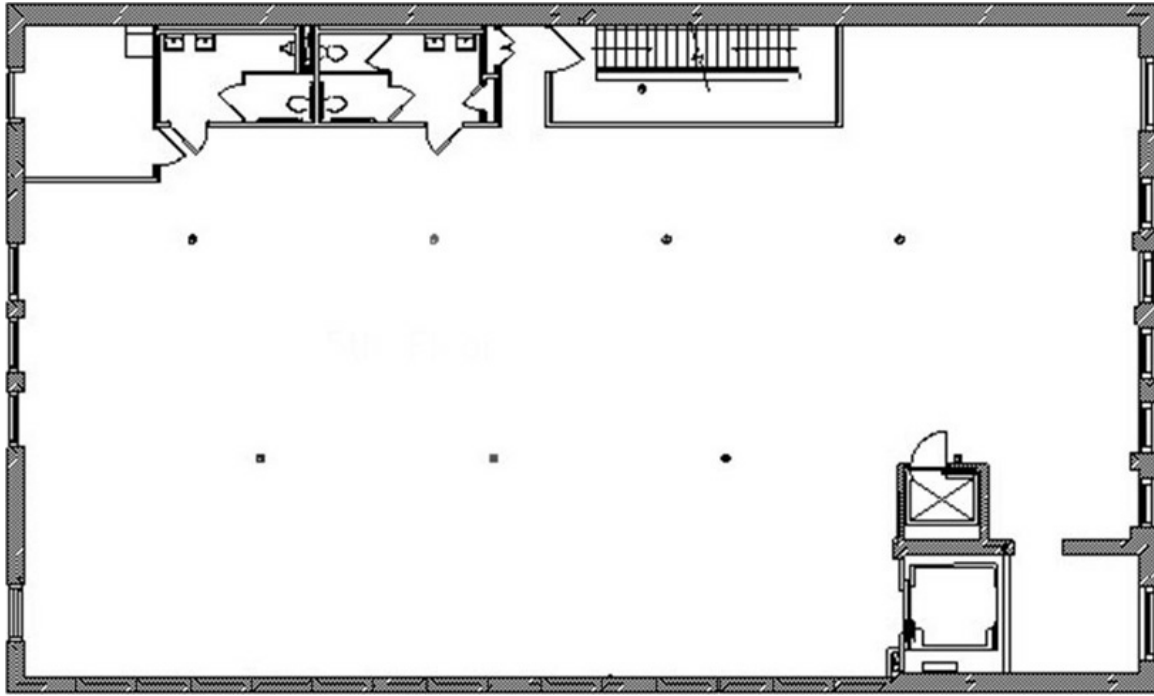
Fantastic views of the Hudson River

Surrounded by the most prominent art galleries in the world

Flanked by the High Line to the east and Hudson River Park to the west

535 West 24th Street

Between Tenth and Eleventh Avenues



Floor Plan



Building



Elevator