

RARE DOUBLE FRONTAGE RETAIL



GROUND 4,400 SF (divisible)
2ND FLOOR 4,400 SF (divisible)
SELLING LOWER LEVEL 3,000 SF
SUB-BASEMENT 3,000 SF

FRONTAGE 26' on Park Place
13' on Murray St
CEILINGS 16' 6" on Ground
13' on 2nd Floor

POSSESSION Immediate

RENT Upon Request

PRIME FEATURES:

Extremely flexible divisions • Private elevator

Double height frontage provides abundant natural light and exposure

Close proximity to historic Woolworth Building, City Hall, Broadway & new World Trade Center site

All uses considered

Near A/C/E, N/R, 4/5/6, 1/2/3 subway trains and the Path train

NEIGHBORS:

Starbucks • Duane Reade • Dunkin Donuts • J & R Electronics • Staples

CHRIS GUZZELLO 646.673.8764
chrisg@sinvin.com

ALEX BAUMOL 646.673.8759
alex@sinvin.com

23 Park Place

AKA 20 Murray Street - Between Church Street and Broadway



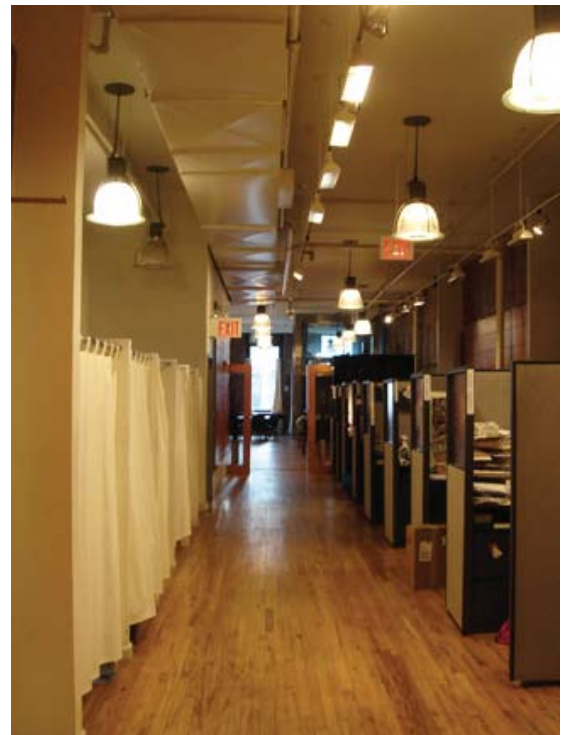
Ground Floor



Second Floor



Lower Level



Length of Second Floor