



Sinvin Realty, LLC and JDF Realty, Inc are proud to offer...

24 East 21st Street

Between Broadway and Park Avenue South
Retail Condo For Sale/Lease

Space

- Ground Floor
2,200 to 4,352 sf
- Basement
2,262 sf

Frontage

- 50'

New Reduced Rent

- \$70/sf

New Asking Price

- Upon Request

Common Charges

- \$1,391/month

RE Taxes

- \$4,859/month

Contact

- **Roxanne Betesh**
212.604.9005
roxanne@sinvin.com
- **Sinvin Realty, LLC**
170 Varick Street
New York, NY 10013

- **Benjamin Kahr**
bkahr@jdfreality.com
- **Leslie Siben**
lsiben@jdfreality.com
212.216.9777
- **JDF Realty, Inc**
345 Seventh Avenue
New York, NY 10001

New Storefronts/New Price/Ready to Rent Restaurant or Dry Use



- New Floor to Ceiling Wood & Glass Storefronts
- 13' Ceilings
- Concrete Floors
- 6 Large Rear Windows
- Divisible (For Lease Only)
- Restaurant Ready with "Black-iron" Exhaust Duct Already Installed
- At the Base of a High End Residential Building
- Neighboring Tenants: Safavieh Carpets, Duxiana Beds, Design Within Reach

Procuring broker shall not be entitled to a commission even upon producing a ready, willing and able purchaser or lessee or as the procuring cause of the transaction, procuring brokers shall only be entitled to a commission, calculated in accordance with the rates approved by our principal, when, as and if received by us and only if such procuring broker executes a brokerage agreement acceptable to us and our principal and the conditions as set forth in the brokerage agreement are fully and unconditionally satisfied, although all information furnished regarding property for sale, rental or financing is from sources deemed reliable such information has not been verified and no express representation is made nor is any to be implied as to the accuracy thereof and it is submitted subject to errors, omissions, change of price, rental or other conditions, prior sale, lease or financing or withdrawal without notice and to any special conditions imposed by our principal.



Features

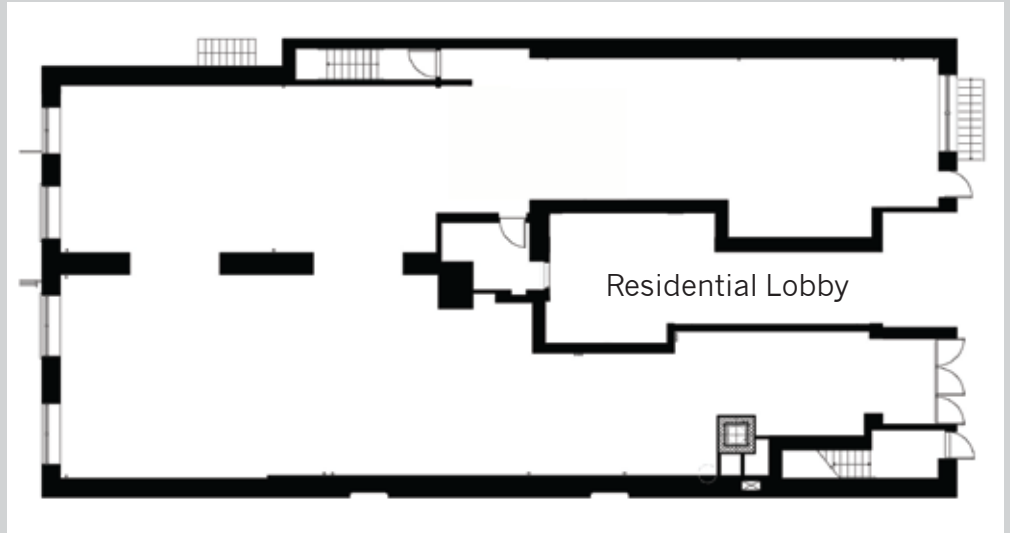
- 2 Floor to Ceiling Storefronts
- 13' Ceilings
- Concrete Floors
- 6 Large Rear Windows
- Restaurant Use Ready with "Black Iron" Exhaust Duct Already Installed
- Neighbors Savavieh Carpets, Duxiana Beds, Design Within Reach

Contact

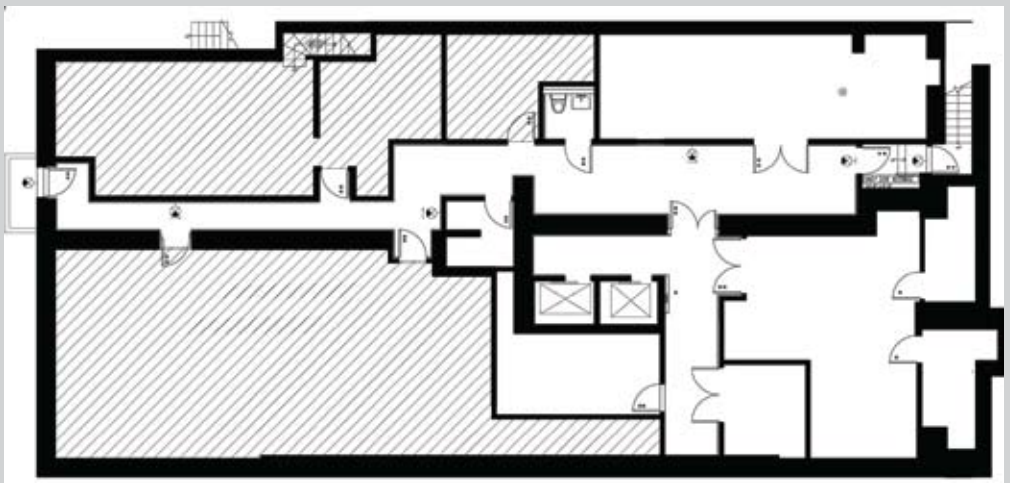
- **Roxanne Betesh**
212.604.9005
roxanne@sinvin.com
- **Sinvin Realty, LLC**
170 Varick Street
New York, NY 10013

- **Benjamin Kahr**
bkahr@jdfrealty.com
- **Leslie Siben**
lsiben@jdfrealty.com
212.216.9777
- **JDF Realty, Inc**
345 Seventh Avenue
New York, NY 10001

Ground



Basement



Facade Rendering

